



THINKING SPACE

technical furniture and control room solutions

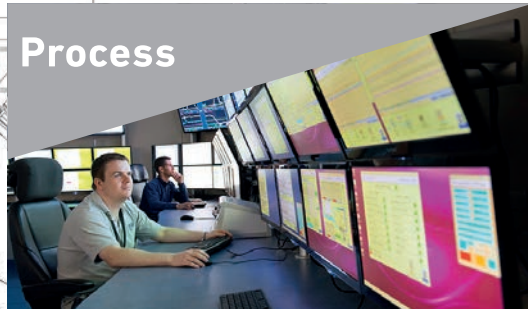
# plant & process

5450.0

4515.0

4485.0

Process



Manufacturing



Utilities



Energy



improving working environments

[www.thinking-space.com](http://www.thinking-space.com)

## Introduction

Thinking Space Systems are experienced suppliers of practical yet stylish control room furniture for plant & process industries worldwide.

Every console is tailored to meet your specific needs using hardwearing materials which not only protect housed equipment but guarantee longevity. Our material choices ensures that furniture is suitable for withstanding the demanding 24/7 industrial environments yet are presentable for visitors which may inspect the heart of the manufacturing or process company.

Thinking Space offer furniture solutions which are ideal for overview production lines, managing process control levels and monitoring manufacturing areas. Not only do our consoles offer the very best in ergonomics, we can provide a range of accessories to boost your working environment; from media walls to monitor and equipment mounts.



## What we offer...

As an engineering company, Thinking Space has the in-house skills to create designs to suit the most challenging requirements and the materials to offer infinite solutions.

All furniture is suitable to sustain busy 24/7 environments and comes with a 10 year guarantee. Clients can be re-assured that all designs conform with British Standards for control room builds.



## Why Thinking Space?

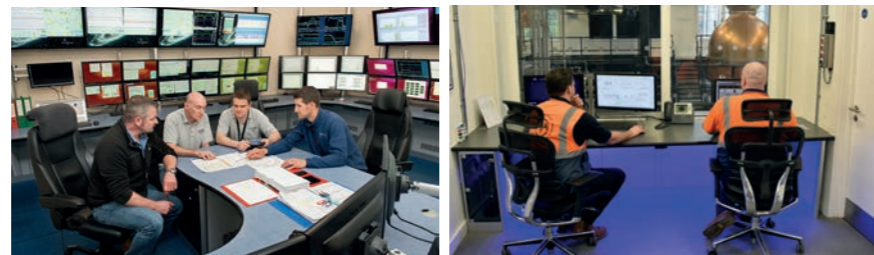
The key differences between Thinking Space's technical furniture and others on the market today are the materials used and the engineering methodology behind them. With bespoke builds it is essential that the materials allow as much design flexibility as possible so as not to limit the solutions available. Using the Inventor CAD software and following ISO9001 processes, Thinking Space can be trusted to deliver accurate, long lasting and stylish technical furniture to the workplace.

As the Company has grown it has developed specialist products and people for specific industries. These small teams of staff are focused on the challenges and requirements within their field and work together in selling, designing, manufacturing and delivering the best solution required. This develops a high level of service in both sales and design that benefits the customer and eases the processes and delivery of what is required within the Company.

It is the drive of the Thinking Space management team to invest in new markets and research and development to keep the products innovative and up with the latest technologies and engineering practices.

## Standards

As an experienced provider of control room furniture, Thinking Space always consider the ergonomic demands of working within 24/7 environments. All design proposals recognise the human factor requirements of control room operators as well as conforming to British Standards for control room design.



## Case studies

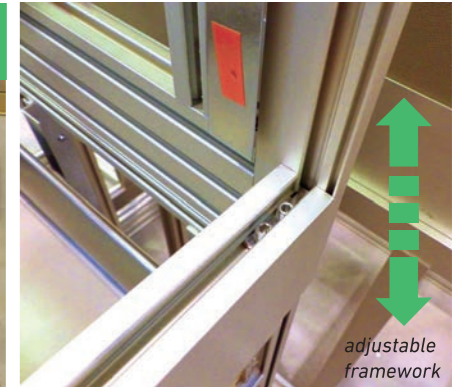
See our plant & process case studies at: [www.thinking-space.com/case-studies](http://www.thinking-space.com/case-studies)

YouTube [thinkingspacesystems](https://www.youtube.com/thinkingspacesystems)

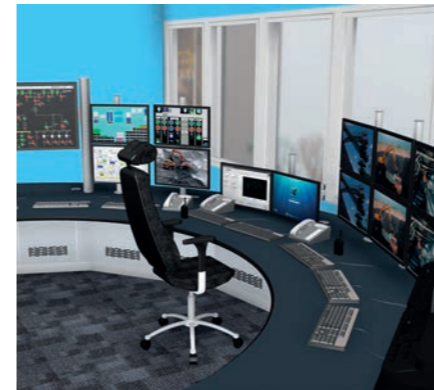
## Core Assembly System

The Core Assembly System provides a lightweight framework for furniture design, with limitless configuration options, as well as improved strength, stability and aesthetics.

Unlike other materials the range of Aluminium extrusions will not fade with use. Extensions to existing designs can be completed without the worry of trying to match old surfaces.



adjustable framework



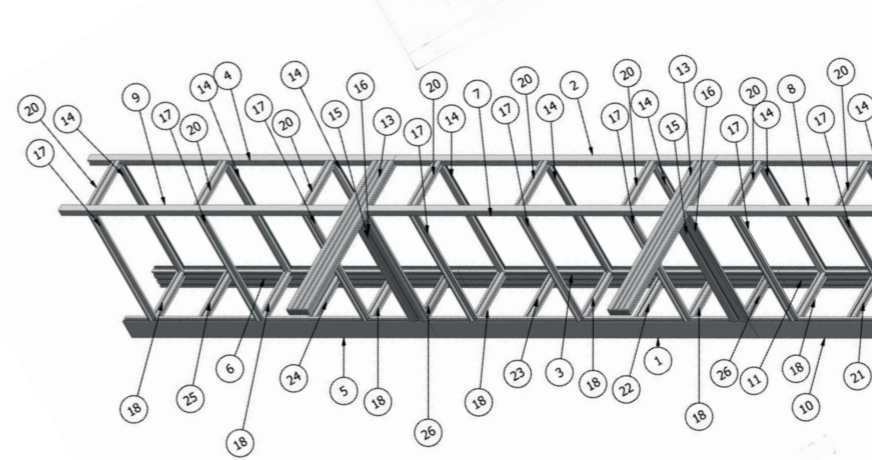
## Award-winning engineered design

Thinking Space use Inventor CAD software to create all bespoke furniture designs. The modelling package is the backbone of the design process. It offers high quality sales proposal drawings, comprehensive site details for the project managers and highly detailed technical models as part of manufacturing packs.

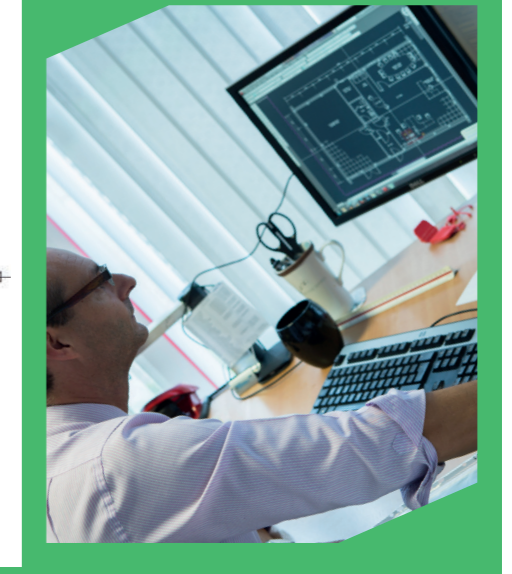
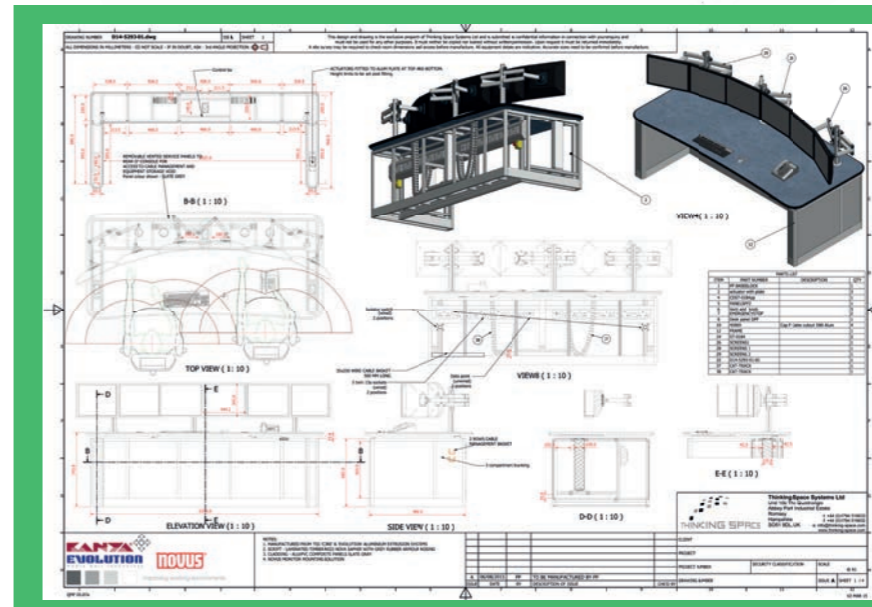
The software has also assisted in the standardisation of many manufacturing procedures, it has helped reduce the lead time on projects and improved the accuracy of information that is transferred from sales, to design and through to the workshop.

Thinking Space are very process driven. The Inventor CAD software ensures clarity throughout a projects' development over multiple product design changes and then accuracy when issued for the manufacturing stage.

The use of the software gives Thinking Space a clear engineering advantage over more traditional furniture manufacturers.



PARTS LIST					
ITEM	LENGTH	DESCRIPTION	cutdetail1	cutdetail2	ITEM QTY
1	1548.0 mm	Kickplate Profile	Cut	Cut	1
2	1548.0 mm	Corner Profile	Cut	Cut	1
3	1548.0 mm	Kickplate Profile	Cut	Cut	1
4	1476.0 mm	Corner Profile	Cut		1
5	1476.0 mm	Kickplate Profile	Cut		1
6	1476.0 mm	Kickplate Profile	Cut		1
7	1448.0 mm	Corner Profile			1
8	1376.0 mm	Corner Profile			1
9	1376.0 mm	Corner Profile			1
10	1376.0 mm	Kickplate Profile	Cut		1
11	1376.0 mm	Kickplate Profile	Cut		1
12	1376.0 mm	Corner Profile	Cut		1
13	830.0 mm	MB1-2			2
14	590.0 mm	Divider Profile	Cut	Cut	9
15	590.0 mm	Facing Profile			2
16	590.0 mm	Facing Profile			2
17	590.0 mm	Divider Profile	Cut	Cut	9
18	250.0 mm	Base Profile	Cut	Cut	9
19	250.0 mm	Base Profile	Cut	Cut	1
20	250.0 mm	Base Profile	Cut	Cut	9
21	250.0 mm	Base Profile	Cut	Cut	1
22	250.0 mm	Base Profile	Cut	Cut	1
23	250.0 mm	Base Profile	Cut	Cut	1
24	250.0 mm	Base Profile	Cut	Cut	1
25	250.0 mm	Base Profile	Cut	Cut	1
26	760.0 mm	Racco Divella			9



# Console solutions

improving working environments

A key difference between a Thinking Space console and others on the market today is the materials used in their design and manufacture.

Every console is a bespoke design, ensuring your particular needs are met, whether it be for a single operator, or multiple operators occupying your control room. We offer an exceptional level of detail and customer service, ensuring your furniture is expertly designed, manufactured and installed.

## Console design



### Framework

The Thinking Space console is constructed using an in-house engineered framework called the Core Assembly System.

This lightweight aluminium build is strong, adaptable and completely recyclable.



### Cladding panels

Aluminium composite panels are printed with a surface design before being lacquered to 20 microns. Choose from standard textures and pattern finishes, custom designs, logos and corporate branding to enhance the desk design.



### Worktops

MDF composite covered in a high pressure laminate and sanitised with an anti-bacterial treatment. Choose from a wide range of colours and finishes.

## Durability

Thinking Space furniture is built to last. The aluminium framework provides a strong reliable base structure, that due to its' open chassis, can accommodate equipment and stationery storage. The thick worktop provides a solid working area for the operator and easily sustains multiple monitor mounts and desktop equipment.

The consoles are proven to last in busy and rugged environments.

## Environmental qualities



In many cases, up to 90% of Thinking Space furniture uses only man made, recyclable materials.

The framework of each console is made from aluminium, which can be recycled when no longer required. The cladding panels are a recyclable aluminium composite. Novus monitor arms are also 100% recyclable, being a combination of aluminium and plastics.

The materials used allow a Thinking Space console to be a fire rated solution, ideal for industrial applications.

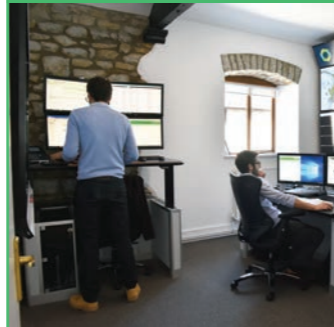


## Cable management



Infinitely adjustable cable management

## Height adjustment



Electric height adjustment, also operated by bluetooth

## Enclosures



Bespoke desktop equipment and alarm pods

## Lighting solutions



- Lighting rigs
- LED maintenance lighting
- Underscript LED lighting, dimmable with colour



- Novus LED dimmable desk lamp
- Littlite task lighting, freestanding or mounted



**YouTube** Watch our latest case study videos

# Control room solutions



**YouTube** Watch our latest case study videos  
[thinkingspacesystems](http://thinkingspacesystems.com)

improving working environments

Novus equipment mounting



Telephone mounts



Monitor mounts

24/7 chairs



Ergonomic seating

Storage solutions



- Custom designed
- Drawers
  - Cupboards

Branding



- Logos and corporate artwork
- Corporate colour schemes

Moni-Trak perfect positioning rail

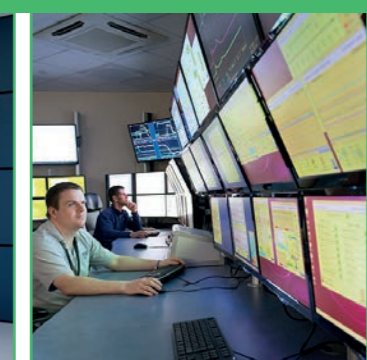


**YouTube** Watch our video

Media walls



Standard media walls



Custom media walls



# Applications



chemical

pharmaceutical

food and beverages

mining and minerals

paints and coatings

water and waste water

paper and packaging

textiles

life sciences and biotech

process control

automotive

oil and gas

renewables

energy

utilities

manufacturing



THINKING SPACE

## Worldwide Offices:



**Thinking Space Systems Australia**  
Thinking Space Systems Pty Ltd  
Unit 1, 55 Holbeche Road  
Arndell Park NSW 2148  
Australia  
w: [www.thinking-space.com.au](http://www.thinking-space.com.au)  
t: 1300 798 106  
e: [lee.evans@thinking-space.com.au](mailto:lee.evans@thinking-space.com.au)



**Thinking Space Systems Canada**  
Thinking Space Systems Ltd  
170-3705 Place de Java  
Brossard, Quebec J4Y 0E4  
Canada  
w: [www.thinking-space.ca](http://www.thinking-space.ca)  
t: +1 (450) 444-3008  
e: [j.groundwater@thinking-space.ca](mailto:j.groundwater@thinking-space.ca)



**Thinking Space Systems USA**  
Thinking Space Systems Inc  
17978 Dumfries Circle  
Olney, MD 20832  
USA  
w: [www.thinking-space.us](http://www.thinking-space.us)  
t: +1 (301) 968-5202  
e: [kjohnson@thinking-space.us](mailto:kjohnson@thinking-space.us)



Thinking Space Systems Ltd  
Unit 10b The Quadrangle  
Abbey Park Industrial Estate  
Romsey  
Hampshire SO51 9DL  
United Kingdom  
t: +44 (0) 1794 516633  
f: +44 (0) 1794 516632  
w: [www.thinking-space.com](http://www.thinking-space.com)  
e: [info@thinking-space.com](mailto:info@thinking-space.com)