



See us at...



ATC Global 2015 Dubai
5-7 October 2015
Stand 6600



ATM World Congress Madrid
8-10 March 2016
Stand 1235

... equipment solutions



wacom tablet mounts



flight strip holders



VCCS mounting



pop-up power

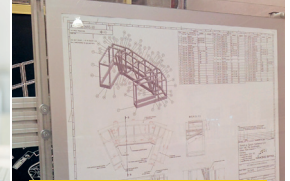
Latest resources...



Our new ATC brochure is now available



universal tablet mounts



light boxes

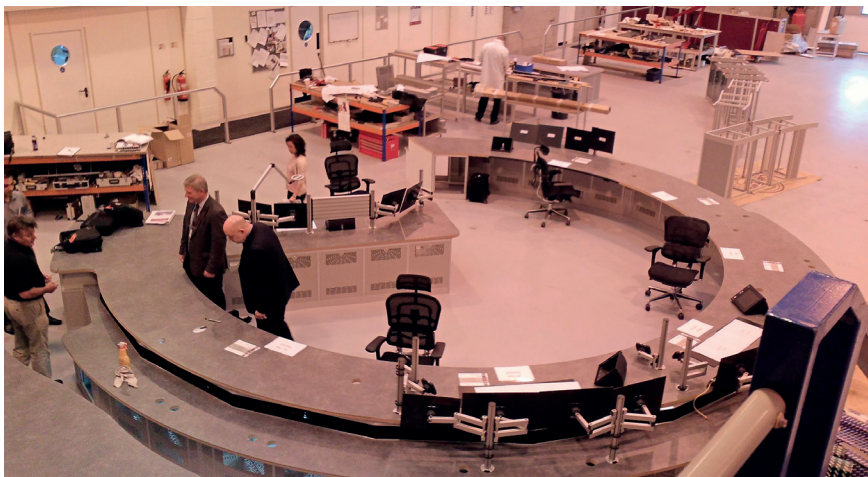


monitor mounts



LED task lighting

Case study:
Manchester Airport



Last year, Thinking Space were successful in designing and manufacturing the seven position tower console, approach console, ops and training consoles as well as a simulator operator console for Manchester Airport, UK. Particular features of the consoles included the mounting of all TFT screens using Novus monitor mounting arms, VCCS adjustable mounts, pod units for additional equipment, low level led lighting and removable panels for access to cable management within the consoles.

Since the factory inspection test back in May 2013, the consoles have now been installed and the control rooms are fully operational. Thinking



Space were welcomed back to the site once again last month to see the furniture and equipment in use. With kind permission by Manchester Airport, a video case study is now available, showing the features and benefits of using Thinking Space furniture for ATC environments. You'll find the video on the Thinking Space YouTube channel, www.youtube.com/user/thinkingspacesystems

Case study: Malta International Airport



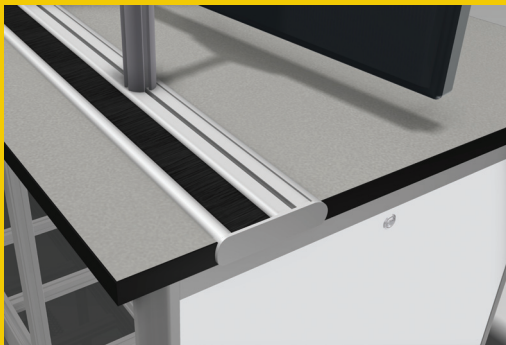
A meeting at an exhibition the previous year has led to a project to provide air traffic control furniture for Malta International Airport. Thinking Space was awarded the contract to provide furniture for its approach control room.

Having completed manufacture at the end of 2013, Thinking Space welcomed Malta ATC to undertake a factory inspection of the furniture. The consoles are configured in a hexagonal shape with 9 operator positions, footrests and equipment mounting. A combination of Evolution Media Wall and Novus creates a specific monitor mounting requirement as well as task lighting (see inset) at each operator position. Due to the intended location of furniture inside the approach control room, the client requested privacy screens be erected to the rear of the console, to reduce sound and distractions from staff passing by.

Having just celebrated a record 9.2% growth in passengers for the first half of 2013, the airports' ATC operators will soon be looking forward to improved facilities.



Research and development



Thinking Space pride themselves on continually improving their products to bring new solutions to clients. Due to popular demand, a new flexible solution for monitor mounting is being launched, by utilising the Novus range of ergonomic accessories.

The new slide rail system is designed to be fitted along the rear of the console, allowing monitor mounts to be positioned at any point along the consoles' width. A brush strip neatly tidies any cables out of sight, providing an aesthetic solution, ideal for ATC environments. For more information, ask our sales team.



Design service

The Thinking Space design service offers all clients:-

- modern, aesthetic design solutions
- designed to ISO 11064
- DDA compliant designs
- an award winning design service with qualified AutoDesk certified draughtsmen, experienced in ergonomics
- site surveys including sight lines
- photo-realistic renders, to help visualise your project

And all FREE of charge!

So if you have a project you'd like to discuss with us, please get in touch.