



# THINKING SPACE

technical furniture and control room solutions

# EVOLUTION

media wall technology



improving working environments

[www.evolutionmediawalls.com](http://www.evolutionmediawalls.com)

## Introduction

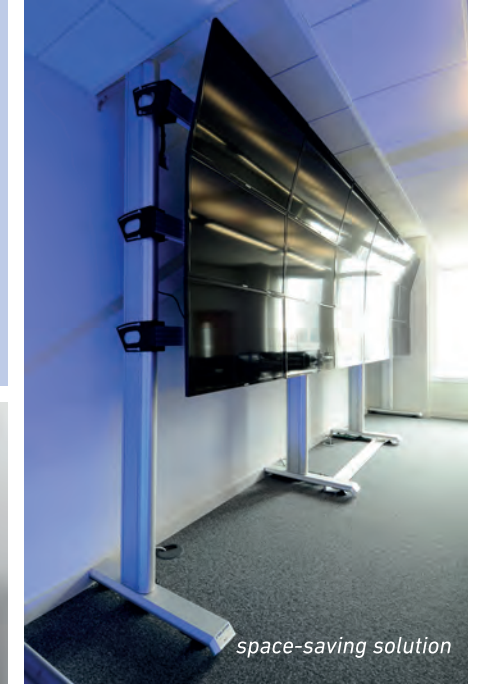
The Evolution range is the latest in Media Wall Technology from Thinking Space Systems, offering complete flexibility in mounting flat screen monitors. Built completely from aluminium extrusions, the Evolution system is an aesthetic solution for domestic, commercial and professional environments.

Supplied in natural aluminium, black or any RAL colour of your choice, the Evolution wall can be personalised to the clients requirements.



## Why choose the Evolution system?

- Flexible design with unlimited wall configurations
- Lightweight and aesthetic aluminium frame
- Adaptable framework for easy modification
- Includes cable management and power distribution
- 10 year guarantee
- Standard configurations available for an "off-the-shelf" solution
- Powdercoating to any RAL colour of your choice
- Bespoke solutions to meet your exact requirements



typical security control room application



## Environments

- Receptions
- Control rooms
- Broadcast studios
- Exhibition stands
- Monitoring stations
- Conference rooms
- Bespoke desk solutions
- ATC training simulators



typical broadcasting studio application



typical render proposal drawing

## Design service

- Free design service including site visit and quotation for all custom requirements
- 3D CAD renders provided to visualise your media wall
- Staff experienced in control room design and ergonomics can provide recommendations and advice on layout and ergonomic design
- For custom designs, site surveys can be provided upon request

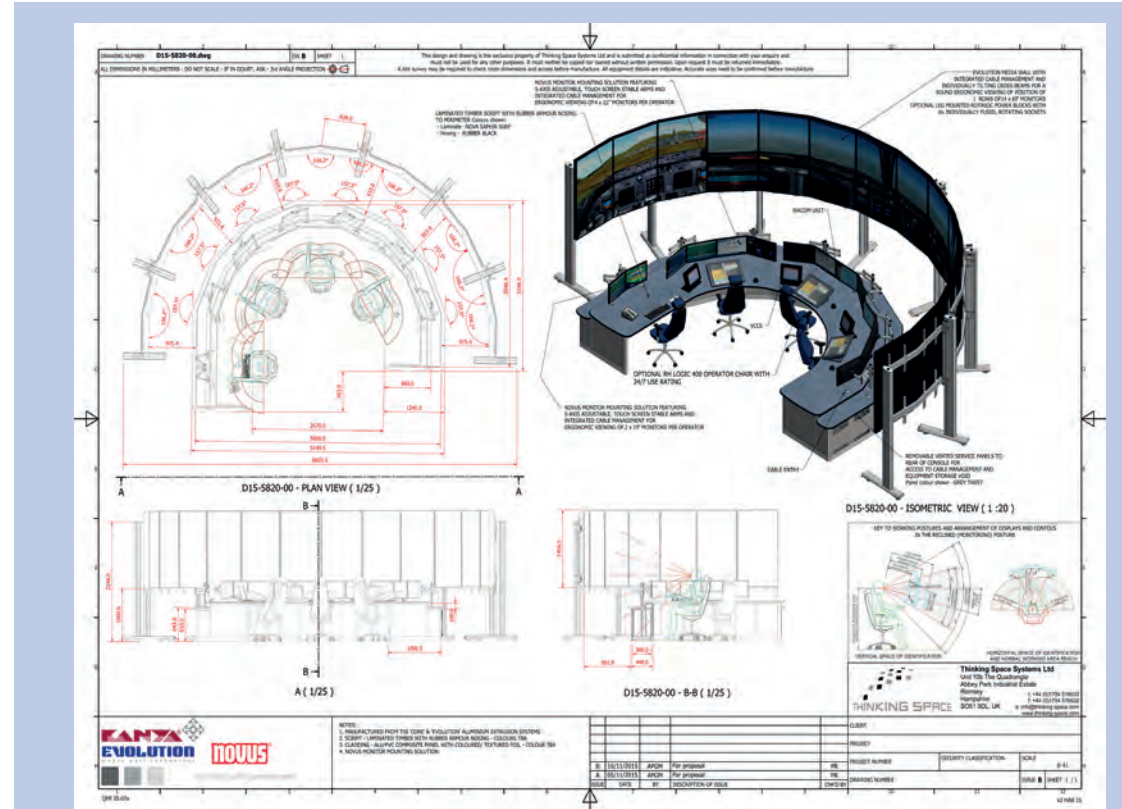
**EVOLUTION** media wall technology

## Videos

See our information and assembly video guides on our YouTube channel



thinkingspacesystems



# Standard media walls

Our range of standard configurations are available as an "off-the-shelf" solution. Media walls are quickly despatched to you for easy self assembly following our guide or tutorial video. The standard range also allows for future expansion as required.

The larger mounts are typically used for flat screen monitors from 37 to 55 inches, for sizes outside of this range we can advise once the model details are known.



4 x 2

typical transport control room application



1 x 2



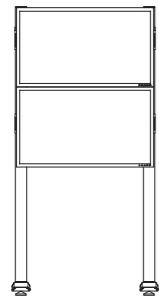
2 x 1



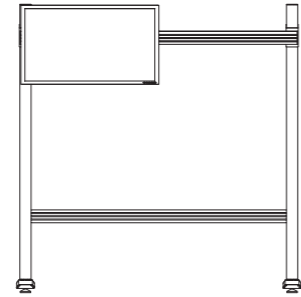
2 x 2



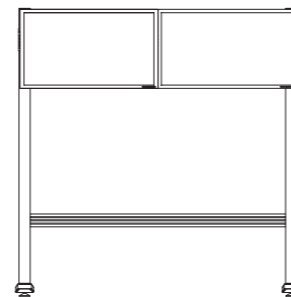
3 x 2



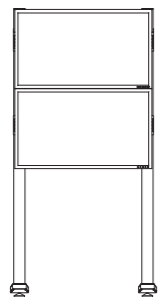
Evolution Media Wall 1x2  
Monitor Configuration ( 1 : 20 )



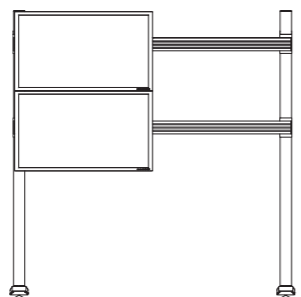
Modification of Configuration: Top Beam Extended  
Lower Brace Beam Added ( 1 : 20 )



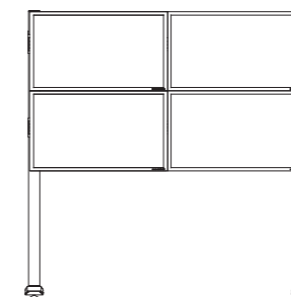
New Evolution Media Wall 2 x 1  
Monitor Configuration ( 1 : 20 )



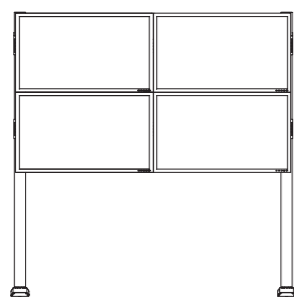
Evolution Media Wall 1x2  
Monitor Configuration ( 1 : 20 )



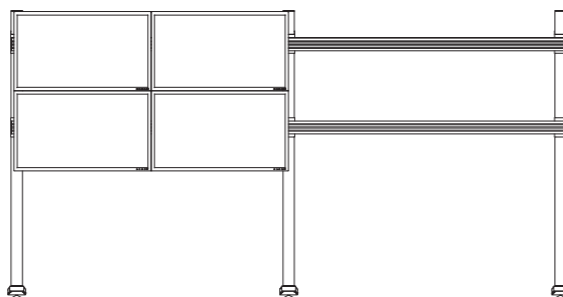
Modification of Configuration:  
Top & Bottom Beams Extended ( 1 : 20 )



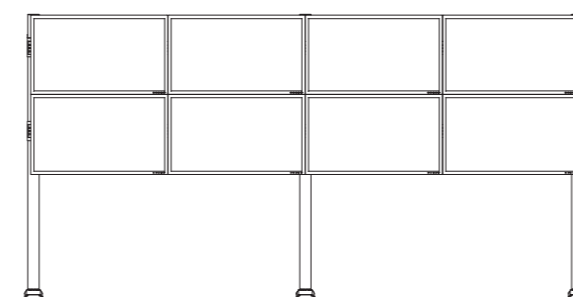
New Evolution Media Wall 2x2  
Monitor Configuration ( 1 : 20 )



Evolution Media Wall 2x2  
Monitor Configuration ( 1 : 20 )



Modification of Configuration:  
Top & Bottom Beams Extended, Middle Leg with Brackets Added ( 1 : 20 )

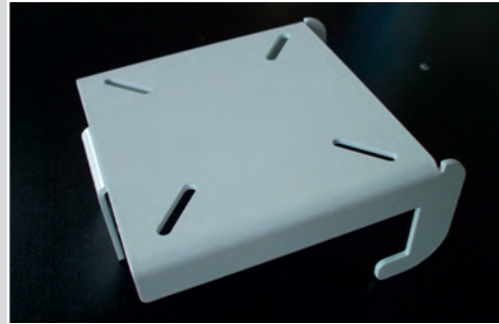


New Evolution Media Wall 4x2  
Monitor Configuration ( 1 : 20 )

## Typical features



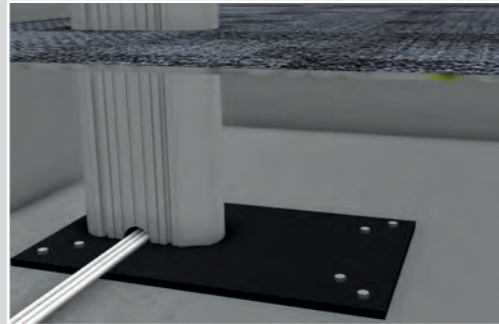
Easy lift off brackets are supplied for mounting larger flat screens from 37" to 55". For sizes outside that range, then please get in touch with us



Fixed lift off plates are the most cost effective solution for mounting smaller screens, perfect for monitors with 75/100 VESA fixings that will be located at a low level



Hollow feet allow cable access through the access floor below. Levelling feet are fitted as standard to provide adjustability



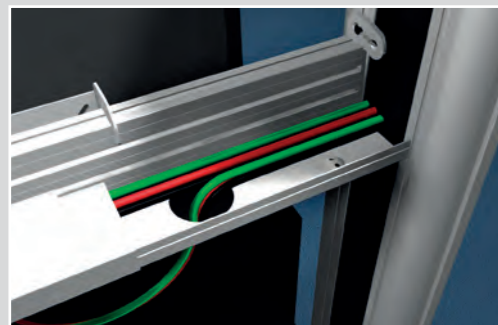
Bolt through the floor detail an option for further stability



Tiltable railing system guarantees all screens are angled the same, up to 30 degrees



Integrated cable management tray supplied as standard



Cable management runs from cable tray through brush strip down the media wall leg where power distribution units can be fitted



Finish with powdercoating to any RAL colour of your choosing

improving working environments



## Custom media walls

We offer custom designs built to your exact requirements. Our experienced team will work with you to create a solution. All we need from you are:

- Your room dimensions
- Sight lines and recommended viewing angles
- Number, size and configuration of flat screen monitors
- Your working environment and workflow details
- Any existing or new furniture requirements



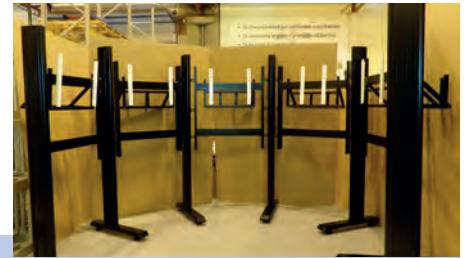


Example of a bespoke ATC Simulator

## Simulators

The Evolution media wall system is a perfect choice for Simulator applications. The angling adjustment behind the screens allows for the configuration of curved effect solutions. Monitors can be mounted in landscape or portrait mode.

Storage shelves can be fitted to the rear of the wall to allow local positioning of PC towers.



## Accessories



Speaker mounts, which can be powdercoated to match the media wall finish



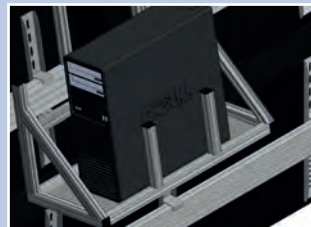
Novus folding arm monitor mounts can be fixed to the media wall for additional mounting options



PC tower mounts can be fitted to the rear of the media wall, allowing siting of monitor and PC together



Digital clock mounting



Find out more at [www.evolutionmediawalls.com](http://www.evolutionmediawalls.com)



### Worldwide Offices:

 **Thinking Space Systems Australia**  
Thinking Space Systems Pty Ltd  
Unit 1/55 Holbeche Road  
Arndell Park, NSW 2148  
Australia  
w: [www.thinking-space.com.au](http://www.thinking-space.com.au)  
t: 1300 798 106  
e: [lee.evans@thinking-space.com.au](mailto:lee.evans@thinking-space.com.au)

 **Thinking Space Systems Ltd**  
Unit 10b The Quadrangle  
Abbey Park Industrial Estate  
Romsey  
Hampshire SO51 9DL  
United Kingdom  
t: +44 (0) 1794 516633  
f: +44 (0) 1794 516632  
w: [www.thinking-space.com](http://www.thinking-space.com)  
e: [info@thinking-space.com](mailto:info@thinking-space.com)

 **Thinking Space Systems Canada**  
Thinking Space Systems Ltd  
170-3705 Place de Java  
Brossard, Quebec J4Y 0E4  
Canada  
w: [www.thinking-space.ca](http://www.thinking-space.ca)  
t: +1 (450) 444-3008 ext.222  
e: [jamesgroundwater@thinking-space.com](mailto:jamesgroundwater@thinking-space.com)

 **Thinking Space Systems USA**  
Opening 2016  
[www.thinking-space.us](http://www.thinking-space.us)