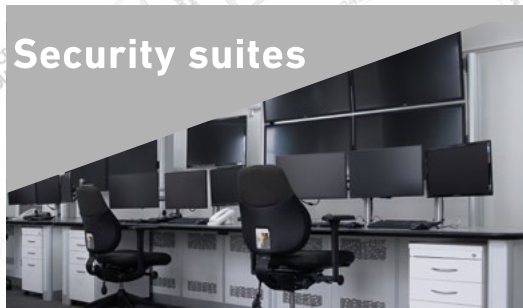


# security

Security suites



Alarm receiving centres



CCTV control rooms



Command & control



improving working environments

[www.thinking-space.com](http://www.thinking-space.com)



## Introduction

Thinking Space has over 20 years' experience in designing and manufacturing innovative and stylish control room furniture. Supplying technical furniture into the Security, Air Traffic, Transport, Broadcast, Emergency Services and Plant & Process industries worldwide.

All furniture is designed and manufactured at the premises in Romsey, Hampshire (UK). From these offices the Company has developed it's own monitor mounting system, Evolution Media Walls. It also sells the MW Video products and represents Novus and Kanya exclusively within the UK.

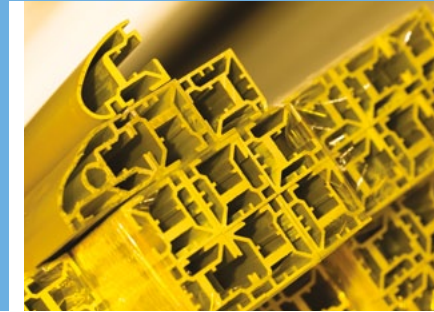
**You Tube** Watch our company videos at [youtube.com/thinkingspacesystems](http://youtube.com/thinkingspacesystems)



## Core Assembly System

The Core Assembly System provides a lightweight framework for furniture design. With limitless configuration options, as well as improved strength, stability and aesthetics.

Unlike other materials the range of Aluminium extrusions will not fade with use. Extensions to existing designs can be completed without the worry of trying to match old surfaces.



## What we offer...

As an engineering company, Thinking Space has the in-house skills to create designs to suit the most challenging requirements and the materials to offer infinite solutions.

All furniture is suitable to sustain busy 24/7 environments and comes with a 10 year guarantee. Clients can be re-assured that all designs conform with British Standards for control room builds.



## Award-winning engineered design

Thinking Space use Inventor CAD software to create all bespoke furniture designs. The modelling package is the backbone of the design process. It offers high quality sales proposal drawings, comprehensive site details for the project managers and highly detailed technical models as part of manufacturing packs.

The software has also assisted in the standardisation of many manufacturing procedures, it has helped reduce the lead time on projects and improved the accuracy of information that is transferred from sales, to design and through to the workshop.

The combination of the Core connecting system and the engineered design software offers future-proofed solutions to the client. Existing builds can be modified or extended should new operators, hardware or systems need to be accommodated.

This use of the software gives Thinking Space a clear engineering advantage over more traditional furniture manufacturers.



## Why Thinking Space?

The key differences between Thinking Space's technical furniture and others in the market today are the materials used and the engineering methodology behind them. With bespoke builds it is essential that the materials allow as much design flexibility as possible so as not to limit the solutions available. Using the Inventor CAD software and following ISO9001 processes, Thinking Space can be trusted to deliver accurate, long lasting and stylish technical furniture to the workplace.

As the Company has grown it has developed specialist products and people for specific industries. These small teams of staff are focused on the challenges and requirements within their field and work together in selling, designing, manufacturing and delivering the best solution required. This develops a high level of service in both sales and design that benefits the customer and eases the processes and delivery of what is required within the Company.

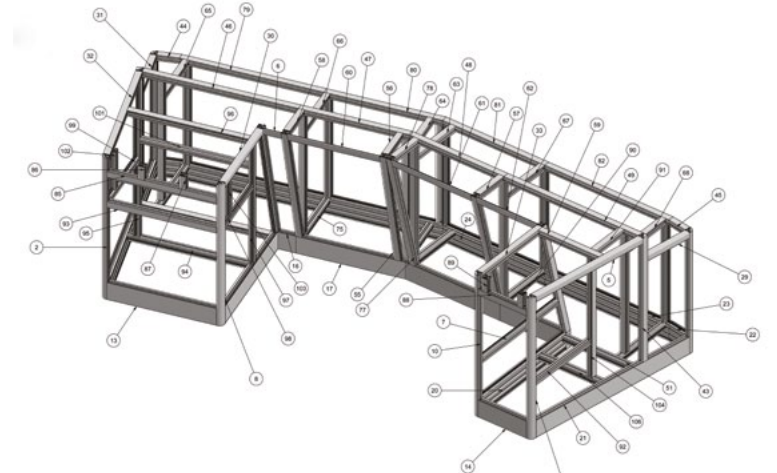
It is the drive of the Thinking Space management team to invest in new markets and research and development that keep the products innovative and up with the latest technologies and engineering practices.

## Standards

As an experienced provider of control room furniture, Thinking Space always consider the ergonomic demands of working within 24/7 environments. All design proposals recognise the human factor requirements of control room operators as well as, wherever possible, conforming to British Standards for control room design

- BS 11064
- BS50518 parts 1 to 3 (for ARC's)
- DDA compliancy

**You Tube** Watch our company videos at [youtube.com/thinkingspacesystems](http://youtube.com/thinkingspacesystems)



## Within security...

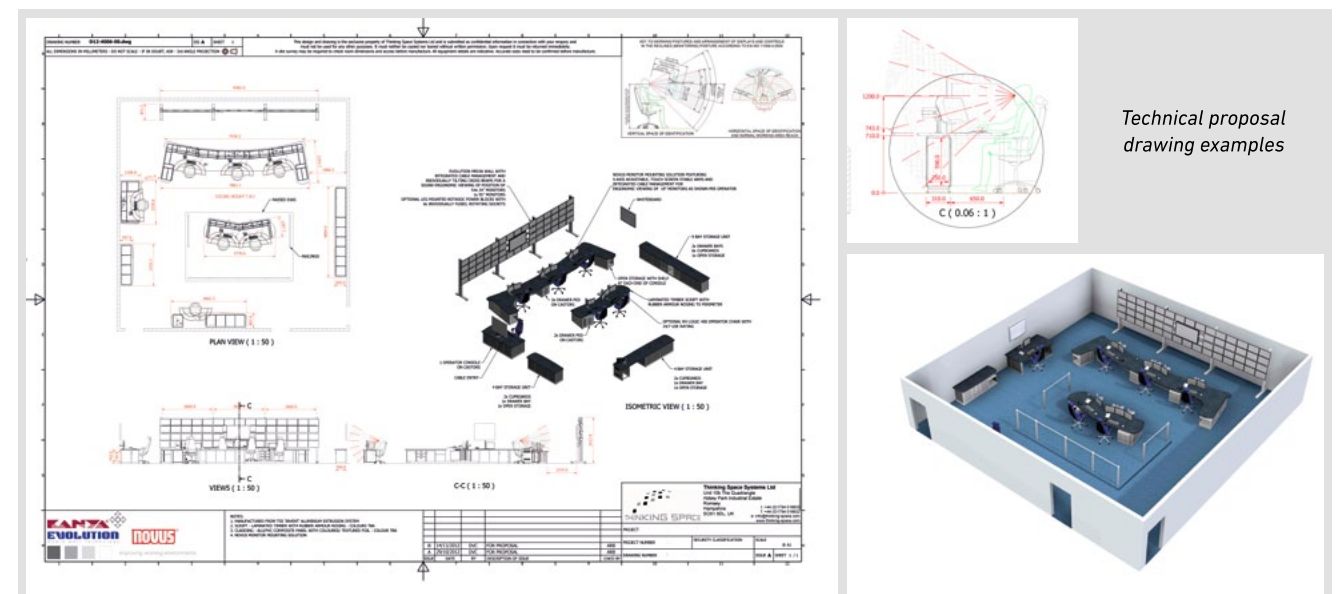
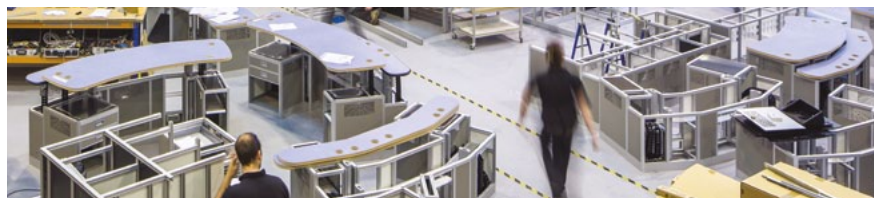
Responding to ever-changing technological advancements in security control rooms worldwide, Thinking Space understands the design demands for such environments. Working closely with security consultants, integrators and end users, they propose the most ergonomic solution, whilst creating a modern, aesthetic design.

The in-house developed Core Assembly System, offers an innovative aluminium build solution solely for technical furniture. Within the security industry, demands on accommodating hardware means that bespoke enclosures, mounting and storage solutions are created with ease.

Thinking Space have a team experienced in the security sector, covering sales, design and project management staff focused entirely on security solutions. For all projects, a Thinking Space project manager is assigned to oversee the completion of the designs, manufacturing (FAT) delivery and installation stages.



See our case studies at [www.thinking-space.com/resources](http://www.thinking-space.com/resources)





# Security furniture

## Materials specification

A key difference between a Thinking Space console and others on the market today is the materials used in their design and manufacture.

Console design



Framework

The Thinking Space console is constructed using an in-house engineered framework called the Core Assembly System.

This lightweight aluminium build is strong, adaptable and completely recyclable.



Cladding panels

An aluminium composite material covered with a laminated sheet finish, with a wide range of colours and textures.



Worktops

MDF composite covered in a high pressure laminate and sanitised with an anti-bacterial treatment. Choose from a wide range of colours and finishes.

24/7 chairs

Pop up electrical supplies

PC bays/racks/drawer pedestals

Branding

Enclosures

Cable management

Worktops

Bespoke desktop equipment pods


Infinitely adjustable and easily accessible cable management

Lighting solutions

Novus LED dimmable desk lamp

- Underscript LED lighting
- LED maintenance lighting
- Lighting rigs

Monitor mounting

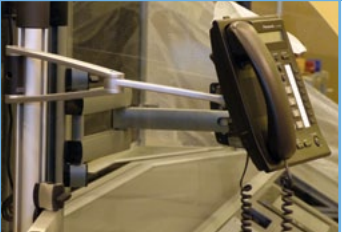


Introducing the Moni-Trak perfect positioning rail

YouTube


Watch the video:  
[youtube.com/thinkingspacesystems](https://youtube.com/thinkingspacesystems)

Novus equipment mounting



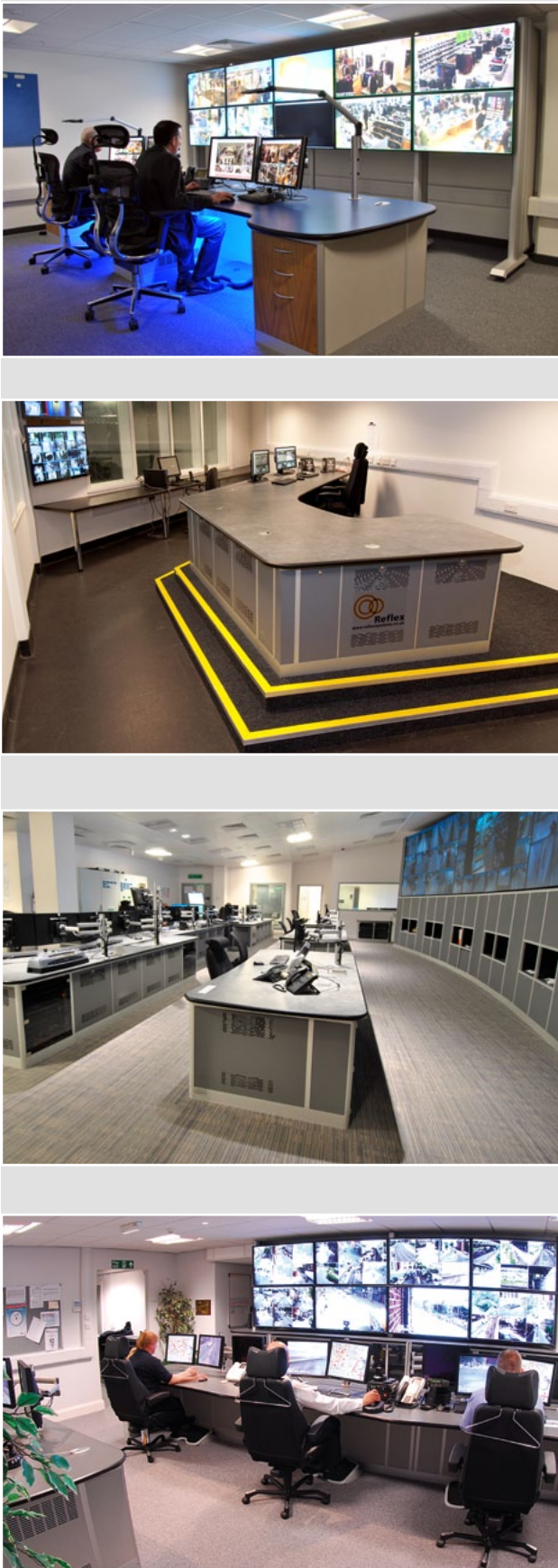
- Telephone mounts
- Monitor mounts
- Document holders

Height adjustment

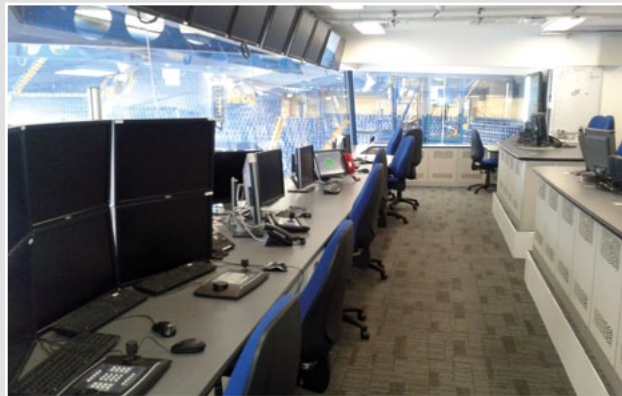


Automated height

YouTube







**You Tube** Watch our latest case study videos

improving working environments

#### Fit out services

- Air conditioning
- Raised access flooring
- Data cabling
- Flooring
- Suspended ceilings
- Lighting rigs
- Electrical services
- Wall partitions
- Decoration
- Demolition and removals
- Fittings and furnishings



#### Project Management

We offer a comprehensive project management service for the fit out of your control room. Our experienced Project Managers will ensure every aspect of the work is planned, co-ordinated and delivered successfully. It is the Thinking Space Project Manager's responsibility to ensure the implementation of all contractual and quality assurance plans. They will manage the scope of the works, identifying key milestones and liaising with all parties throughout.



#### Storage solutions



**EVOLUTION**  
media wall technology

[www.evolutionmediawalls.com](http://www.evolutionmediawalls.com)



standard configurations



custom solutions



# Applications

retail

hospitals

casinos

financial  
institutions

emergency  
services

sporting/  
entertainment  
venues

museums

public  
buildings

prisons

utility  
companies

hotels

education

alarm  
receiving  
centres

data centres

local authority  
& government  
buildings

airports



Thinking Space Systems Ltd  
Unit 10b The Quadrangle  
Abbey Park Industrial Estate  
Romsey  
Hampshire SO51 9DL  
United Kingdom

t: +44 (0) 1794 516633  
f: +44 (0) 1794 516632  
w: [www.thinking-space.com](http://www.thinking-space.com)  
e: [info@thinking-space.com](mailto:info@thinking-space.com)

Other brands:

**EVOLUTION**  
media wall technology  
[www.evolutionmediawalls.com](http://www.evolutionmediawalls.com)

**NOVUS**  
[www.novus-uk.co.uk](http://www.novus-uk.co.uk)

**KANYA**  
[www.kanya-uk.co.uk](http://www.kanya-uk.co.uk)

**MW**  
MW VIDEO SYSTEMS LTD  
[www.mw-video.com](http://www.mw-video.com)